



THE NATIONAL PIPE ARCHIVE

Registered Charity Number 1043065

Accession Number: LIVNP 2012.06.221

Description: Note book containing drawings and descriptions of pipes found in Broseley and in the Shropshire area (Book 1) compiled by David Atkinson

Comments: Atkinson has indexed the marks at the end of the book.

Key Words: Clay tobacco pipe; Broseley; Shropshire; Bailey, Bradley, Darbey; Deacon; Gething; Harper; Hartshorne; Hughes; James; Legg; Mason; Peck; Perry; Pinner; Povel; Price; Roden; Roberts; Savage; Sir; Smith; Smitheman; Southorn; Taylor; Tucker

Scanned: PDF 18 January 2017

Any images in this PDF must not be lent, copied to another party, sold or reproduced in any way without prior permission from the National Pipe Archive and the copyright owner, if applicable. Reproduction or publication in any medium is expressly forbidden without written authorisation and should include an acknowledgement worded 'Courtesy of the National Pipe Archive' and quoting the relevant accession number.

118 D. R. Atkinson,

116 Phyllis Avenue,

Peacehaven, Sussex.

LIV NP 2012.06.221

Spur marks so far recorded (definite)

<u>Initials</u>	<u>types</u>	<u>Possible maker</u>
AB	1,2,3,4	Andrew Bradley
BL	1	Ben Legg
EP	1	
IL	1,2	John Legg
RH	1,2	Rich or Ralph Harper
SA	1	Samuel Acton
SH	1	Sam Hughes
SL	1	Samuel Legg
SR	1	Sam Roden
TG	1	Thomas Gething
TH	1	Thomas Hughes or Hart ^{me}
WD	1,2	Will. Darbey
W	1	
TI	1	Thomas Jones
II	1	John Jones
IH	1	John Hartshorne

Pipes found at

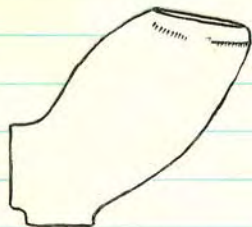
Broseley

and in the Shropshire
area.

Book 1.

Possibly George Hartshorne.1640-1706

A larger bowl
also has
this same
mark.



relief.

Pipe c. 1650 is rather an early form
for this maker. Found near Wroxeter.



relief

This elongated type bowl, c. 1660-70. (Bentham)
See Book II p. 87.

F. B

c. 1650



relief

Found at Worcester.

Other Worcester examples are recorded.

0

5cm

© National Pipe Archive

W.V.

W^m Unsworth II of Ludlow (c.1650-60.)
d^d 1695



relief

Several examples from Ludlows area.

There are two dies of the mark, varying slightly,
as do shapes of the bowls.

Three W^m Unsworth pipemakers are
now identified at Ludlow from
local records. Only No 2 qualifies
for these marks. Probable period
of working c1660-80.

D. B.

4.

c. 1670-90



relief

Two examples found at Church Streeton.
Mark inverted on both, and could be QB.

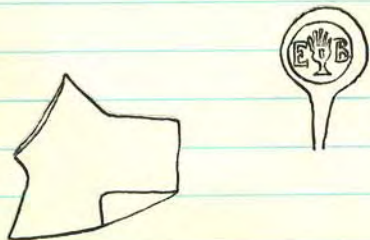
A good example with stem and
identical mark found in Dublin
c 1999 (photo from Joe Norton).

E. B.

c. 1700 or

These are late Tailed heel types

Later.



relic

Two examples from Church Stretton. This stem and base.



Bowl from Broseley Wood, same mark. Another has 4 ins of stem.

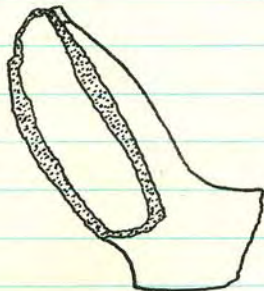
W.S.

6.

Poss. William Savage.

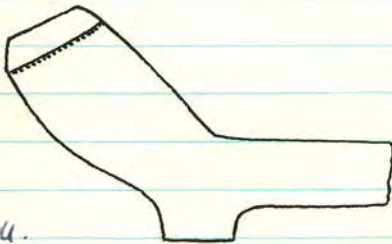
died 1724.

See page 148.



relief

Found at Chirk (Wales). Pipe c. ~~1680~~? 1680?



relief

Bentall.

Earlier pipe, c. 1660, with a very similar mark.

0

5cm

© National Pipe Archive

John James

Two of this name contemporary.
See p. 59, 141.

1677-1697

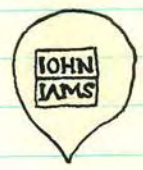


Brazeley.



relief

Two or three
des of this
type exist



relief

Brazeley. No 'E'.



Dated example.



relief

(Benthall)



Richard Legg

(See page 40) Also Book II p. 132
(" " 18)

c. 1680-1700



Brasley



relief

Found in garden by Legg Alley, Common at Hackley

Brasley

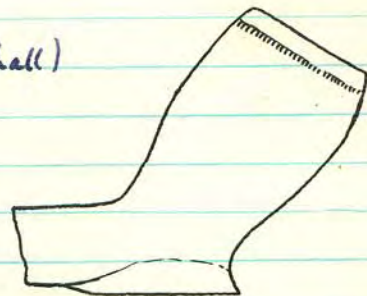


relief

Date example (Benthall)



relief



9.
R.R.

Possibly Richard Roberts.
(See p. 11)

c.1700



relief

Church Stretton

Joseph Hughes

Born 1660.

c. 1680-1700



relief

Church Stretton

Richard Roberts

Unrecorded
of Much Wenlock.

c. 1680-1700

Wilt 1716



relief

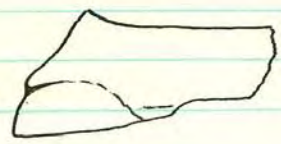
Church Stretton
Wall

John Legg

Several later John Leggs.

1655-99.

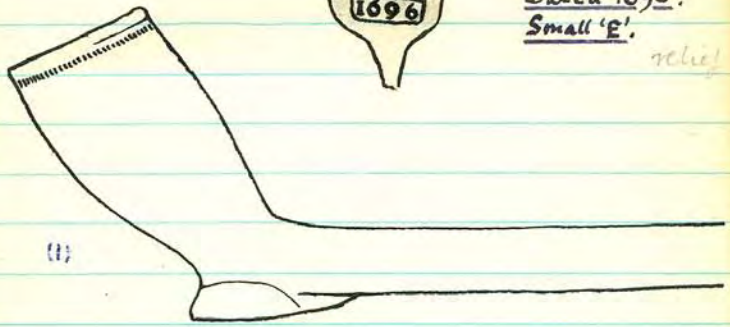
See also Page 40.



(1)

relief

Brosley



(2)

Dated 1696.

Small 'E'.

relief

(1)

Same mark (1) Thin walled, open lipped bowl.
An earlier, more bulbous, thicker bowl with
thicker stems has same mark.

W. D.Poss. William Derby, 1700-22.

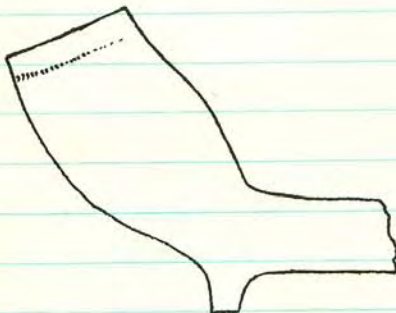
c.1700



relief

Broseley

See Book II, p.70.



relief

Broseley

I. L.

~~_____~~

c. 1690

Possibly John Legg.

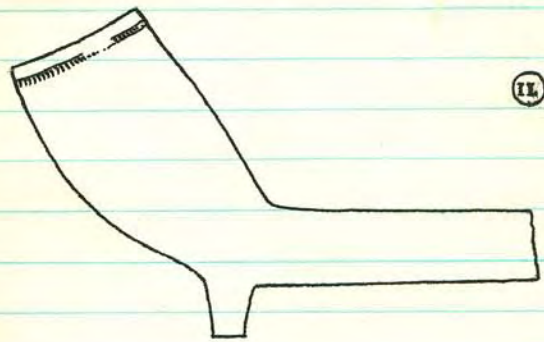


IL

Brasley

relief

There is a similar, smaller mark, below:



IL

Brasley, wood

relief

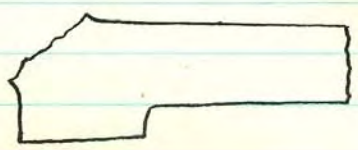
Grif Povel (?)

Possibly George Poole

1696-1717

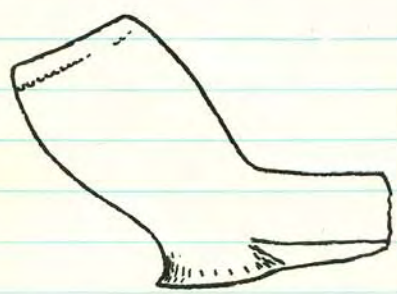


relief



GRIF
POVL

Church Stretton & Benthall



relief

Benthall. Probably George Poole.

H.I.

c.1680-1700



relic

Church Stretton



R.P.

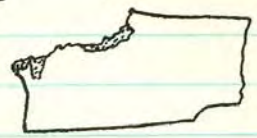
Randle Peck or Richard Price

c. 1680.

Broseley. Initials.

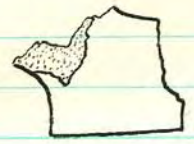


1.



2.

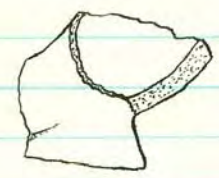
Broseley. Semi-full name.



3.

relief

Benthall. Semi-full name. Larger heel.



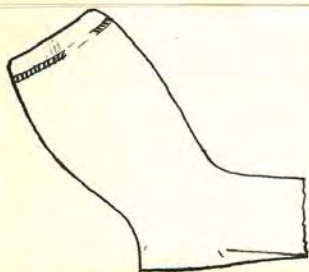
4.

Broseley

full name

relief

See page 8 for later marks. And Book II page 132.



Unusually
small example
of bowl with
heart shaped
heel.

relief

Brosley and Benthall



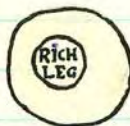
(1)

c.1670-80



(1)

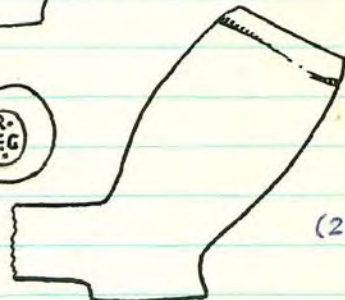
Small relief marks on
bowl type 1.



(2)

relief

c.1680.



(2)

Early forms of semi-full name. Also found on
Dotted 'i'. Several dies. Smaller bowl.

I.B (?)

c.1690-1700



ⓔ

relief

Braley.



I.H.Poss. John Hantslome.

c.1700



relief

Bilton, Sincisbury.

See also Book II, page 62.

I.H.

c.1630-40

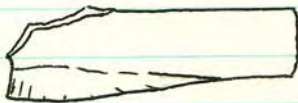


relief

Earliest Broseley pipe so far found. Tiny heel
with small mark in relief.

I.A.~~Unknown maker~~~~c.1670~~

c.1700



x2.5x



x2.5x

Ludlow

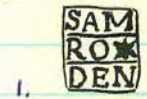
John Arthur of Ludlow d^d 1734.

Sam Roden

Born 1702

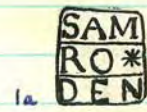
c.1720-40

(See page 32)
(and page 128)

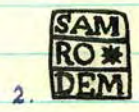


Six pointed star.
Various dies.

across
stem



1a



2.

Eight pointed
star. Large
letters.

Eight pointed.
star. Error of
spelling RODEN. relief.

Examples from Broeley, and elsewhere (1 and 2)



(across stems)

2a



3.



4.

relief

2a. 'H' in Rhoden. No lines.

3. Similar type on thicker stem. No star.

4. Initials with fleur-de-lis.



5.

along
stem.

4a



← Early type mark but along
stem. Possibly a different

person, as SALOP probably refers to Shrewsbury.

Andrew James

Unrecorded

c.1720-40

across

stem



relief

Two examples from Luddlow. There are actually 2 horizontal lines and not a star in the top line by $\boxed{AN=}$ thus.

Wife Elizabeth had daughter Jane in London March 1764. Andrew (of Braceley) then 32.

In 1768 Eliz. had a son, also in London.

But Andrew then recorded as of Wedgburg, Stafford, aged 35. Why did he have his children at the Lying in hospital in London?

John Bradley

Several of this name, c.1660-1830.
(See page 173)

Benthall

across

stem



c.1720-40

relief

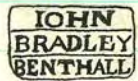
8 printed notes

Near Craven Arms.

Numerous at Broseley and Benthall.

along

stem.



Later c.18th

relief

Broseley Usually badly stamped. This type of stamp could be as late as 1830-40, but was more probably in use c.1760-1800. See p.173.

across

stem



c.1720-40

Benthall

(dot)

(no star or dot)

relief



Thomas Taylor

Mained 1670.

c. 1720 (?)

See p. 89

across
stem



relief
c. 1750-60

Brosely & Benthall. Large and small marks.



Benthall
across stem

relief

relief



Brosely, W. ind
heel
c. 1720



William Smith ■

Uncoded.

c.1720?

across
stem



relief

This mark is much cruder than others ~~found~~
found on a stem. The letters are almost
sans-serif and some appear, in clearest
specimens, to be joined to the dividing lines.
Possibly a rough cut stamp of wood.

Thomas Legg (I)Born 1653 died 1719.

c. 1750

across

stem



relief

across

stem



relief

across

stem



relief

These are probably marks of a later
Thomas Legg, mid-eighteenth century.

All found at Broseley.

The 'M' probably indicates the Lion Inn.

Richard Legg

Many of this name in C18th. Supplied Lion Inc.

Marks on this page date to c. 1760-1800.

A Richard Legg, 53 in 1841, working at Legg's Hill, was probably the user of some of these marks, c. 1813 onwards. (?) Unlikely.

across
stem



Later
C18th.



relief

> N^o45

WILKES <

One stem has this stamp additional to the above; the two probably are parts of one, referring to John Wilkes's paper

Several examples from Broseley and Wenlock.



(a)



(b)



(c)



(d)

All these marks are on stems with fine polished finish. In relief. (a) is along stem.



I. Perry

John Perry.

#1780-1820

pre-1842-53

along
stem

I-PERRY
BROSLEY

relief

Brosley along stem.

JHN
PERRY
BROSLEY

relief

J. Perry 1842 deceased.

John Perry 1853

PERRY
BROSLEY

along stem

relief

Small sans-serif letters.

Broseley.

1841
~~1841~~
(aged 45)



along
stem

SPINNER
BROSLEY

relief

Broseley

PINNER
BROSLEY

along
stem

reversed N's.

relief

C.18th.



across
stem



relief.

Braceley



Similar marks with initials.

relief

RH : Poss. Richard Hughes

RL : Poss. Richard Legg

IH : Poss. John Hantsborne
John Hughes

WM :

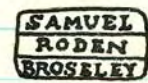
For similar marks see various makers.

Samuel Roden

One of several (see p.22)
Probably Samuel Roden

c.1780-1820?

along
stem



relief

Broseley

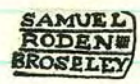
along stem.



relief

Similar mark, slightly larger, different frame,
thicker stem.

along stem



relief

Small grill after RODEN.

J. Southorn

c. 1830
enig

~~thru~~

Susanna & Joseph Southorn lived
at Leggs Hill in 1841 and had 3
children. Susanna may have worked
on her own ~~before~~ ~~with~~ Joseph.
At some time.

along

S-SOUTHORN
BROSELEY

relief

stem

Broseley. Possibly Susanna Southorn 1845.

1841-53

along

J. SOUTHORN
BROSELEY

incuse

stem

This is Joseph Southorn.

Noah Roden II

Working 1824-1850. Some of these may be earlier.
Noah Roden I working c 1790-1829.

NOAH ROD
BROSEL

Relief along stem.

NOAH RODEN
BROSELEY

incuse

Incuse mark along stem. This was probably
the first incuse mark at Broseley.

NOAH
RODEN
BROSELEY

NOAH RODEN
BROSELEY

Marks in relief on thin stems (along)

Broseley.

NOAH
RODEN
BROSLEY

(NOAH
RODEN
BROSELEY)

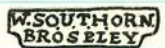
Marks in relief along stems.

W. Southorn

(brothers)

working 1829

along
stem



relief

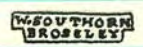
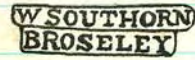
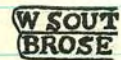
Brosley. Thin stems.



along stem.

relief

Benthall. Thick stem.



Relief marks of various sizes.



W. Southorn & Co.

Working 1850-1900.

W. SOUTHORN & CO
BROSELEY 18

1.

W. SOUTHORN & CO
BROSLEY 12 SALOP

2.

incuse

Incuse stamps along stems. The number stands for the person in the factory making that particular pipe. Stems with stamp 1 and various numbers are found almost everywhere.

Site of dump of kiln waste found at Benthall, 3/67.



Metal token of this firm.

Working 1863.

E. SOUTHORN
BROSELEY 9

1

E. SOUTHORN'S
PATENT

2

incuse

*Incuse stamps along stems. Type 1
occurs in Sussex.*

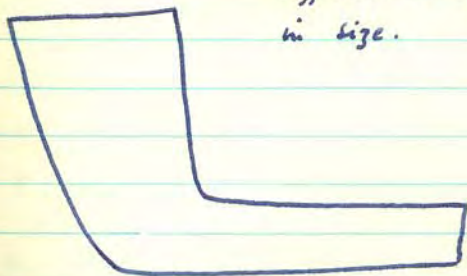
*Probably Edwin Southorn. Worked at
Pitchyard (Broseley Wood) but his pipes
were fired in W. Southorn's kiln.*

R. Smitheman & Co.

c. 1890-1910

R. SMITHEMAN & CO
BROSELEY 9*incuse*

*Incuse stamp along stem. Lettering in
different stamps various
in size.*



*Pipes from kiln site
found in 1964. Various
other varieties, many
thick and crude.*

Will. Gething.

(Unrecorded).
Married 1766

c.1720



relief

Mark reconstructed from parts of
two on different stems. (Complete mark
also found on a stem)

Brosley etc.



Similar mark but small 'E' and reversed
'N'. Full spelling.

See page 117.

Richard Legg

Early C.18th.

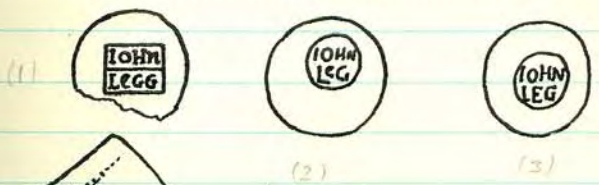
across
stem.



relief

This mark is similar to that found on heels (see p.8) See also page 159.

Brazeley and Ludlow.



John Legg

Small stamps on
Large round heels,
c. 1680-90.

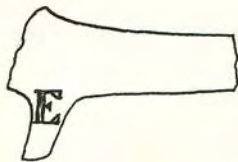
milling round stems of 1 and 2.



E.T

Munslow

c.1830!



Found at Munslow. Moulded initials E/T.
 Most unusual for Braceley area.

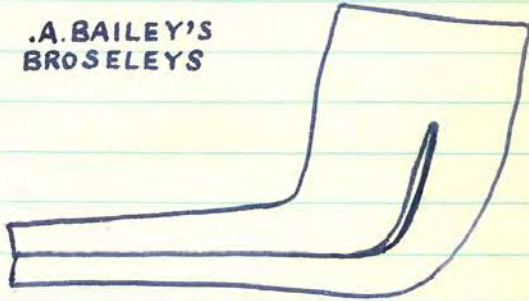


- A. Bailey

c.1920?

**.A. BAILEY'S
BROSELEYS**

incuse



Modern looking pipe dug up in Radnor.
*Incuse stamp on stem. Probably from an
 old Brosley mould, hence the stamp.*

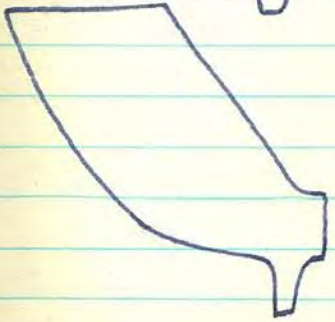
Bowls found in Broseley area of eighteenth century date. These were doubtless the types which had marks on the thin stems.



Shiny finish, very thin, brittle bowl, very thin stem. c. 1750-80 (Ben Legg)



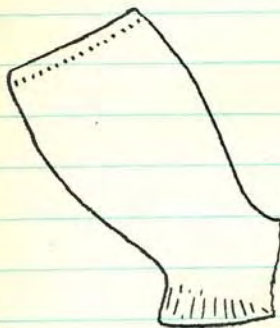
Shiny finish, thicker, heavier, bowl and thicker stem. c. 1700



Shiny finish. Plenty curving bowl, walls becoming thinner, thin stem, sharp pointed open. c. 1720-50

Mary Hughes

c. 1680



relief

Bentall

Two Mary Hughes are recorded at Brossley



relief

Bentall

Small bowl. There is also a much larger variety.

Samuel Legg

See also page 156.

1670-1729



relief

Benthall.



relief



relief

Benthall.

Abbr. forms.
"LEGG"

John Hartshorne

c. 1680



Benthall

Several of this name at Broadley.
Another stamp has slightly larger lettering.



The larger stamp.

See Book II, pages 62 and 111.

Will Legg

1664 - 1714



relief

Braceley.



Same mark

Another mark has squarer stamp and large E in LEGG.

Oliver Price

1684-1694



relief

Benthall. Best also



Benthall
No milling

relief

Benjamin Legg

(1) 1711-1721

(2) 1760-1780



1.

c. 1720



1a

c. 1720

Three different marks on thin stems.



2.

c. 1770



3.

c. 1770

1, 1a and 2 are C18th and No. 3 is
(probably early C19th) 1 occurs on stems
of yellowish gritty texture.

Brosely.

See p. 109.

Thomas Gething

Rec. 1698

~~Unrecorded~~

c. 1700-20

At Least five different dies on stems.

Also hind low.

Av. stems and bow.



Dot after THO.

Dot after ING.



No lines.



lines.

error
THO.

relief

Quite a thick stem from Benthall.

Same mark on thinner stems, common at Benthall.
(Several dies.) Some have a dot or colon after THO.

relief

Benthall. Bowls also found.

Another
stem
mark.

A spur also has a tiny TG mark.



Robert Harper

Unrecorded

c. 1700-20

ROB
HAR
PER

relief

Stem from Braeley.



Base from Benthall. Bowl also found.

Edward Deacon

1683 - 1729



relief

Small piece of thin stem from Church Streeton.
Also several at Broseley.



relief

Fairly thick stems from Benthall, and Broseley.



relief

Broseley
(stem)

Broseley
(stems)

Mark on heel.
c. 1700

This mark is also
found with no bar
to the 'E's.

John Legg Junior

c. 1720 or
Later.



relief

Stems at Broeley.



Thomas Mason

Unrecorded

c. 1720



relief

Stem from Church Stretton.

Thomas Tuck(er)

Unrecorded.

c. 1720-40.

THO
TUCK

relief

Stem found at Church Stretton.



J. Legg

c.1780-1820.

c. 1820?

thin stem

J. Legg
Brosley

relief

Brosley

This must be one of the last of several
John Leggs.



R. L.

Probably a Richard Legg.

c.1750 or
later.

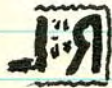
Thin stems
from Braeley.
Dull, unpolished
surface.



relief



Slightly earlier mark on fine polished stem.
Top initial stands for surname. R and L are
initials of husband and wife.



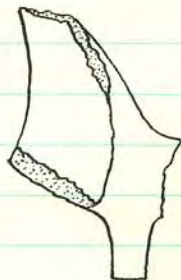
relief

A reversed mark by
error.
Second letter may not be 'L'.



A. B.

[REDACTED] Andrew Bradley, married 1695.



(AB)

relief

A similar mark has smaller letters.

Brazeley.

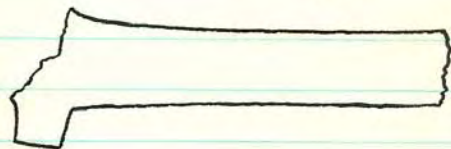
See also Book II p. 77, 145.

(AB)

relief

(AB)

relief



Benthall. c. 1700-20.

(AB)

relief

These pipes have been found in kiln waste with those bearing the full name stamp of Andrew Bradley, 4/68.

John James

See page 7.

1677-97

These stem marks are probably later than those
on heels, c. 1720.

Benthall



relief


Mark on thickish stem, somewhat larger than
that found on heel (page 7)

Broseley



relief

Similar mark also on thickish stem. This
shows traces of another line of lettering at
top and has no bars.

Another stem shows  which is probably
the full wording.

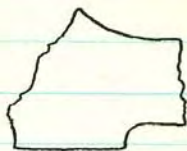
Meaning? Possibly husband and wife.

Several of these marks from Benthall, 4168.

Richard Sir

See page 140.

c. 1690



relief

Benthall. Semi full-name stamp.



relief

Benthall. An unusually small example of the normal square full-name stamp. Note spellings, SIR and SVR.

Index to makers listed in this book

<u>Name</u>	<u>Page (Book I and II)</u>
Bailey, A	42
Bradley, Andrew.	58, 77
Bradley, John.	24
Darbey, William.	13, 70
Deacon, Edward.	52
Gething, William.	39
Gething, Thomas.	50
Harper, Robert.	51
Hartshome, George.	1, 87
Hartshome, John.	20, 46, 62, 111, 130
Hughes, Joseph.	10
Hughes, Mary.	44
James, Andrew.	23
James, John.	7, 59.
XXXXXXXXXX	41
Legg, Benjamin.	49, 109,
Legg, John.	12, 56, 40.
Legg, John, Junior.	53.
Legg, Richard.	8, 18, 28, 40, 57, 132.
Legg, Samuel.	45
Legg, Thomas.	27, 66, 72.
Legg, William.	47

Index

<u>Name</u>	<u>Page</u>
Mason, Thomas	54
Peck, Randle.	17
Perry, I.	29
Pin ^{ner.} ner. , S.	30, 31
Povel, Grif.	15
Price, Oliver.	48
Price, Richard.	17
Roden, Noah.	34
Roden, Samuel.	22, 32.
Roberts, Richard.	9, 11, 84.
Savage, William.	6
Sir, Richard.	60
Smith, William.	26
Smitheman & Co, R.	38
Southorn, Edward.	37.
Southorn, S; Southorn, J.	33
Southorn & Co, W.	35, 36.
Taylor, Thomas.	25, 89
Tucker, Thomas.	55.
<u>Initials</u> : F.B, 2, W.V., 3, D.B., 4, E.B., 5, H.I., 16, I.B., 19, I.H., 20, I.A., 21. I.L., 14. Fleur-de-lis, 31.	